



BEEF GENETICS

Marbling Plus More..

Females, Rare Semen, & Flushes
October 14, 2022. 6pm (CST)



LCC Miss Lady 6333 023 FL



Fink Miss Lady 8007 4294 GS



Fink Miss Lady 6362 019 FL

Thank you to Ankony Farms, Georgia, for their purchases of the Fink and Larson pick of the herds the past couple years. Virgil Lovell is assembling one of the greatest collections of Charolais genetics with phenotype, soundness, and EPDs anywhere.

Guest Consigner:



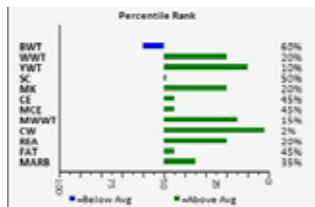
For more information or to request a catalog please visit our website:

www.finkbeefgenetics.com

FINK GOLD STANDARD

EM799353

Hunt to try and find a 12 year old bull with these kind of EPDs, in balance and with this much proof. He has the best disposition of any bull we have worked with. His daughters have been excellent and have great udders. He still remains in the pasture today!

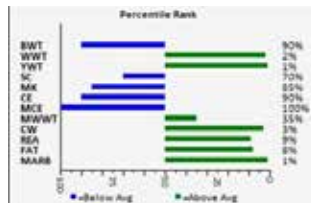


LCC HONDO

EM7954471

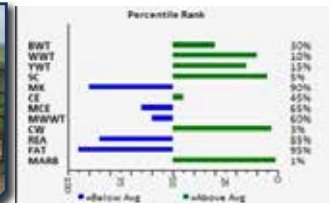
Top 1% TSI! 2%WW, 1%YW, 3%CW, 9%REA, 8%Fat, 1%Marb. Scanned 4.35 for IMF with .14 rib fat.

Try finding many of those. The dam is an outstanding Gold Standard out of the "023" female back to "6868". Hondo marbling is no accident. This bull is out of a no-miss family. Pictured after running with cows for 90 days.



LCC 923 OF 6868 FL

EM931950



Top 10% WW, 15% YW, 5% SC, 4% Udder, 5% Teat 1% Marbling. Watch for this bulls EPDs to climb! Our 1st set of calves by him look very good! He is a full brother to many of Megan's "Free Lunch x 6868" females. He is co-owned with Greg Myers in Kentucky and was our top selling bull in the spring 2020 sale. His first set of weaning data increased his WW EPD. Pictured as a yearling coming off cows.

Sale Information

Galen Fink– 785-532-9936
Lori Fink– 785-532-8171
Megan Larson– 785-410-5559
Chad Larson– 620-242-3528
Nick Hargrave– 785-293-2176
Tara Hargrave– 573-682-7339

Ringmen/Consultants:

Brett Sayre– 573-881-1876
(AICA) Field Reps
Hadley Schotte– 785-562-6632
David Hobbs– 913-515-1215

Auctioneer:

Matt Lowery
308-750-6119



Video:

All females will be videoed and will be up by October 5th on Ideal Video Productions.

DVAuction
Broadcasting Real-Time Auctions

Sale Order:

Will sell In catalog order!!
Semen & flushes will be last.

Pregnancy Status:

Females will be ultrasound checked approx. Sept. 20th. They will be checked again close to sale time and updates will be listed on our website an announced sale day. All confirmed bred females will be guaranteed for 45 days pregnancy after sale day. Notification must be made immediately to us if there is a problem.

Delivery:

Delivery on females is at buyer's expense. We will certainly help on arrangements if asked. We cannot load bred females, heifer calves, etc.; with bulls for safety of the females. If we coordinate delivery, we will guarantee a maximum of \$300 per head. If we can get it done cheaper, we will by all means do so. We cannot always guarantee delivery to your doorstep, when we have loads of cattle, we ask buyers to meet livestock haulers on their route which may not always be in the daytime as we ship many of our bulls by semi.

Accommodations:

Manhattan, Clay Center, and Marysville, KS.

Transportation:

Kansas City International Airport is 2.5 hours away.
Manhattan Regional Airport has flights coming from Chicago and Dallas.

Sale Location:

Northwest of Manhattan, KS approx. 20 miles.

Bar Graphs as of 8-1-22

Schedule of events:

Friday October 14-

10 am– Females and Bulls on display
6 pm CST– Fink Fall Female Sale.
Dinner and our annual gambling night will be available!

Saturday October 15-

Noon CST– Bull sale with sale order as Angus, Charolais, Red Angus x Charolais bulls.
(130 Charolais bulls sell!!!)

LOT
1

MF KISSES 454 LD

DOB: 9/10/2014 • EF1199327 • P

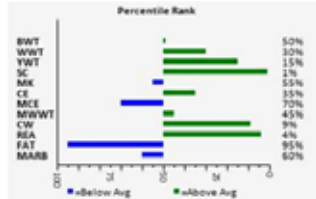
LT BLUEGRASS 4017 P
LT LEDGER 0332 P
M791626 LT BRENDA 6120 PLD

LT ASSERTION 1277 P
LT PEARL'S BREEZE 2236 P
LT RIO BRAVO 3181 P
LT BRENDA'S EASE 3055PLD

LC SUSPECT 0109 P ET
MF KISSES 7701 SP
EF1080751 SWEGLE CREEK OLYMPIA ET

LT WYOMING WIND 4020 PLD
LC MISS LACI CAE 104
LT WYOMING WIND 4020 PLD
SWEGLE CREEK PICABO 801

454 won her class at the 2016 Jr. National for Mitchell Duer. This cow would be an excellent candidate if your wanting to make some show calves. The original Kisses female was the 2005 Reserve Grand at Jr. National while her Mother was the Grand B&O at the 2009 Jr. National. Her udder is looser from having mastitis last year. However, it has not stopped her production as every year she has weaned one of the biggest natural calves and that is no joke!



Bred AI 6/19 to RBM Keystone and exposed to LCC Hondo until August 15.



Lot 1- MF Kisses 454 LD

LOT
2

FINK PERFECTION 7758 429 GS

DOB: 10/2/2017 • F1255971 • P

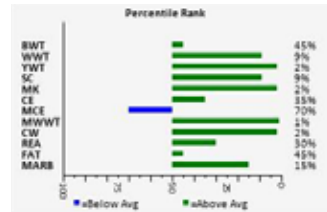
M6 NEW STANDARD 842 P ET
FINK GOLD STANDARD 0153
EM799353 FINKS MISS 25503575BUDET

LT RIO BRAVO 3181 P
M6 MS GRID MAKER 2175 ET
RC BUDSMYDAD 225 POLLED
WCR MISS TRADITION 3575

VPI FREE LUNCH 708T
FINK PERFECTION 429 7742 FL
EF1198087 FINK PERFECTION 7742 248 GM ET

LT RIO BLANCO 1234 P
VPI MISS DUCHESS 404 P
M6 GRID MAKER 104 PET
M6 MS E46'S DUKE 248 PET

Top 1% TSI. Super nice cow and a past donor. EPDs really fit this female. Grandam "7742" is a full sister to M6 New Standard's dam! "7742" is a donor for Tom Greco, Astro Farms. The dam of this female is at Frank Turner and David Innes herd in Alabama. Lots of green lines!!



Bred AI 6/5 to LCC Hondo and exposed to LCC Hondo until August 15.

#40 in the breed for TSI! (2017 born)



Lot 2- Fink Perfection 7758 429 GS

LOT
3

LCC MISS LADY 8855 6868 FL

DOB: 8/23/2018 • EF1275485 • P

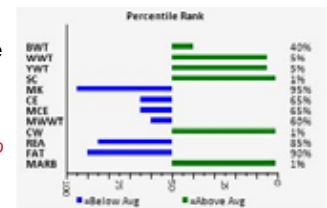
LT RIO BLANCO 1234 P
VPI FREE LUNCH 708T
M736773 VPI MISS DUCHESS 404 P

WCR PRIME CUT 764 PLD
LT PRAIRIE MAID 4054
WCR PRIME CUT 764 PLD
VCR MISS DUCHESS 703 PLD

M6 GAIN & GRADE 927 PLD
MF MISS LADY 6868
F1061484 FINKS LADY 1867 4X6BUDET

WCR SIR DUKE 761
M6 MISS MAC 4140
RC BUDSMYDAD 225 POLLED
FINKS PERFORM 4X6D040PET

Top 2% TSI, 1% Udder, 1% Teat. She is one you will want to watch if your looking at EPDs. Her two front teats are a touch longer on this female. She is one of the few direct 6868 daughters we have left. She is also a past donor. Bred AI 6/4 to DC/CRJ Tank exposed to LCC Hondo until August 15.



#9 in the entire breed for Marbling!



Lot 3- LCC Miss Lady 8855 6868 FL

Fink Production Cows- Spring 2022 Bred (Several Past Donors)

LOT
4

LCC MISS LADY 994 OF 2675 FL

DOB: 3/5/2019 • EF1286456 • P

LT RIO BLANCO 1234 P
VPI FREE LUNCH 708T
M736773 VPI MISS DUCHESS 404 P

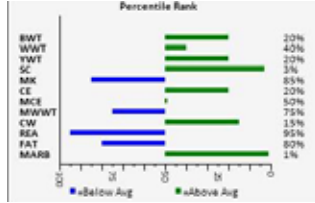
WCR PRIME CUT 764 PLD
LT PRAIRIE MAID 4054
WCR PRIME CUT 764 PLD
VCR MISS DUCHESS 703 PLD

M6 GRID MAKER 104 PET
MF MISS LADY 2675 6868 GM
EF1166658 MF MISS LADY 6868

WCR SIR TRADITION 066
VCR MISS MAC IV 317
M6 GAIN & GRADE 927 PLD
FINKS LADY 1867 4X6BUDET

Top 8% TSI. 994 is a powerful female! She lost her first calf. We have been flushing her heavily. She stems back to the famous 6868 cow, which is one of the best producing cows in the breed. She is also in the top 1% for Marbling!

Bred AI 6/25 to LCC Hondo exposed to LCC Hondo until August 15.



Lot 4- LCC Miss Lady 994 2675 FL

LOT
5

FINK LADY 7757 428 GS

DOB: 8/28/2017 • F1255970 • P

M6 NEW STANDARD 842 P ET
FINK GOLD STANDARD 0153
EM799353 FINKS MISS 25503575BUDET

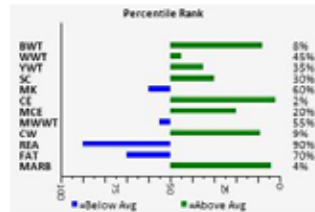
LT RIO BRAVO 3181 P
M6 MS GRID MAKER 2175 ET
RC BUDSMYDAD 225 POLLED
WCR MISS TRADITION 3575

VPI FREE LUNCH 708T
FINK LADY 428 4945 FL
EF1198086 FINKS LADY 4945 2286 9108

LT RIO BLANCO 1234 P
VPI MISS DUCHESS 404 P
LT UNLIMITED EASE 9108
FINKS LADY 2286 4X6066ET

Top 4% Udder, 8% Teat. Past donor. Very attractive female with lots of muscle and volume. Her dam is currently working at Frank Turner's ranch in Alabama. From the 'Lady' family that started Megan's herd. Watch for her two Lock N Load daughters selling.

Bred AI 6/23 to Pelton's Wideload (sexed male) Red Angus exposed to LCC Hondo until August 15.



Lot 5- Fink Lady 7757 428 GS

LOT
6

FINK VANITY 069 6314 GS

DOB: 2/18/2020 • EF1298734 • P

M6 NEW STANDARD 842 P ET
FINK GOLD STANDARD 0153
EM799353 FINKS MISS 25503575BUDET

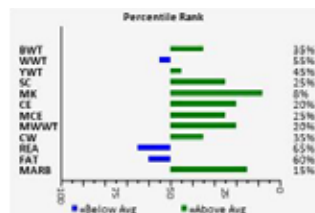
LT RIO BRAVO 3181 P
M6 MS GRID MAKER 2175 ET
RC BUDSMYDAD 225 POLLED
WCR MISS TRADITION 3575

VPI FREE LUNCH 708T
FINK VANITY 6314 3911 FL
EF1239596 FINK VANITY 3911 9532 GS

LT RIO BLANCO 1234 P
VPI MISS DUCHESS 404 P
FINK GOLD STANDARD 0153
FINK VANITY 9532 6879 GM

We are trying to cut back on spring calving numbers. We are basically a fall program or these females would not be offered yet! Nice uddered, 1st calf female. Gold Standard daughters are very nice. Lots of green bars!

Bred AI 6/17 to LCC Hondo exposed to LCC Hondo until August 15.



Lot 6- Fink Vanity 069 6314 GS



FINK VANITY 072 6314 GS

DOB: 2/20/2020 • EF1298737 • P

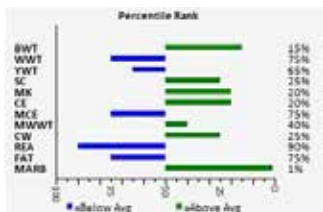
M6 NEW STANDARD 842 P ET
FINK GOLD STANDARD 0153
 EM799353 FINKS MISS 25503575BUDET

LT RIO BRAVO 3181 P
 M6 MS GRID MAKER 2175 ET
 RC BUDSMYDAD 225 POLLED
 WCR MISS TRADITION 3575

VPI FREE LUNCH 708T
FINK VANITY 6314 3911 FL
 EF1239596 FINK VANITY 3911 9532 GS

LT RIO BLANCO 1234 P
 VPI MISS DUCHESS 404 P
 FINK GOLD STANDARD 0153
 FINK VANITY 9532 6879 GM

Well bred Gold crossed with Free Lunch. Been a great combination at Fink's. Perhaps the trait that isn't measured is Gold's disposition that he puts into his offspring. 1st calf heifer here. Full sister to previous female.
Bred AI 6/17 to LCC Hondo exposed to LCC Hondo until August 15.



FINK PERFECTION 3834 7738 FL

DOB: 8/30/2013 • EF1184769 • P

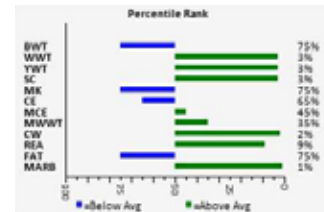
LT RIO BLANCO 1234 P
VPI FREE LUNCH 708T
 M736773 VPI MISS DUCHESS 404 P

WCR PRIME CUT 764 PLD
 LT PRAIRIE MAID 4054
 WCR PRIME CUT 764 PLD
 VCR MISS DUCHESS 703 PLD

M6 GRID MAKER 104 PET
FINK PERFECTION 7738 248 GM ET
 EF1084119 M6 MS E46'S DUKE 248 PET

WCR SIR TRADITION 066
 VCR MISS MAC IV 317
 LHD CIGAR E46
 M6 MS DUKE 009 PLD

Top 1% TSI, 2% Udder, and 3% Teat. Dam is a full sister to M6 New Standard's dam. This female has flushed pretty good for several years. She has grossed well over \$200,000 in bull and female sales for us. Teats are getting a touch longer but her natural Marbull calf that sells in the bull sale will be one of the biggest!! This is a power female with excellent feet. Dam is a donor for Tom Greco, Aristo Charolais.



Bred AI 6/27 to LCC Hondo exposed to LCC Hondo until August 15.

#4 in the breed for Marbling! (2013 born)
#15 in the breed for TSI! (2013 born)



FINK KISSES 7536 3823 FL

DOB: 8/22/2017 • EF1256121 • P

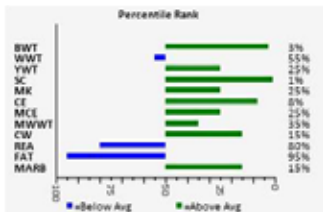
LT RIO BLANCO 1234 P
VPI FREE LUNCH 708T
 M736773 VPI MISS DUCHESS 404 P

WCR PRIME CUT 764 PLD
 LT PRAIRIE MAID 4054
 WCR PRIME CUT 764 PLD
 VCR MISS DUCHESS 703 PLD

FINK GOLD STANDARD 0153
MF KISSES 3823 9725 GS
 EF1184876 MF KISSES 9725 BG

M6 NEW STANDARD 842 P ET
 FINKS MISS 25503575BUDET
 LT BLUEGRASS 4017 P
 SWEGLE CREEK OLYMPIA ET

Top 15% TSI, 10% Udder, 25% Teat. Past donor as were her dam, granddam, and great granddam! "411" Kisses is the line of cattle that were very practical show cattle that were very successful for Megan.
Bred AI 6/26 to Gold Standard exposed to LCC Hondo until August 15.



FINK PERFECTION 3832 7738 FL

DOB: 9/5/2013 • EF1184767 • P

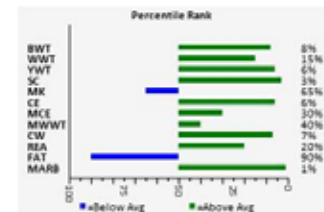
LT RIO BLANCO 1234 P
VPI FREE LUNCH 708T
 M736773 VPI MISS DUCHESS 404 P

WCR PRIME CUT 764 PLD
 LT PRAIRIE MAID 4054
 WCR PRIME CUT 764 PLD
 VCR MISS DUCHESS 703 PLD

M6 GRID MAKER 104 PET
FINK PERFECTION 7738 248 GM ET
 EF1084119 M6 MS E46'S DUKE 248 PET

WCR SIR TRADITION 066
 VCR MISS MAC IV 317
 LHD CIGAR E46
 M6 MS DUKE 009 PLD

Top 2% TSI. Full Sister to 3834! Still very nice udder. One front foot has a vertical crack it has not affected her movement. 3832 has been a donor for several years also. She does have scar tissue on left side. We will never know be sure what it's from but we have had guesses of a lion, unusual cuts, and abscesses, it hasn't hurt her health!



Bred AI 6/13 to LCC Hondo exposed to LCC Hondo until August 15.

#22 in the breed for Marbling! (2013 born)
#24 in the breed for TSI! (2013 born)



LCC MISS LADY 9319 5778 GS

DOB: 8/28/2019 • EF1291180 • P

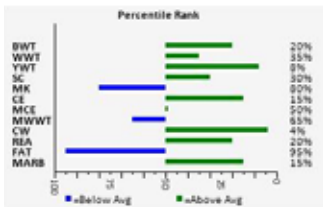
M6 NEW STANDARD 842 P ET
FINK GOLD STANDARD 0153
 EM799353 FINKS MISS 25503575BUDET

LT RIO BRAVO 3181 P
 M6 MS GRID MAKER 2175 ET
 RC BUDSMYDAD 225 POLLED
 WCR MISS TRADITION 3575

VPI FREE LUNCH 708T
MF MISS LADY 5778 023 FL
 EF1221282 FINK MISS LADY 023 BG

LT RIO BLANCO 1234 P
 VPI MISS DUCHESS 404 P
 LT BLUEGRASS 4017 P
 MF MISS LADY 6868

9319 is a Gold Standard daughter that had a rough go as a calf. Teats on this female are a touch longer. Her dam '5778' is the #1 high marbling female of the 2015 series. Still a donor at Fink's.
Bred AI 7/2 to LCC Hondo exposed to LCC Hondo until August 15.



Lot 11- Fink Perfection 3832 7738 FL

LOT
12

NH LADY 0386 7450 GS

DOB: 8/25/2020 • EF1316128 • P

M6 NEW STANDARD 842 P ET
FINK GOLD STANDARD 0153
EM799353 FINKS MISS 25503575BUDET

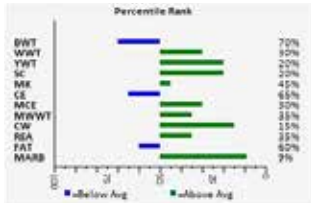
LT RIO BRAVO 3181 P
M6 MS GRID MAKER 2175 ET
RC BUDSMYDAD 225 POLLED
WCR MISS TRADITION 3575

VPI FREE LUNCH 708T
NH LADY 7450 0409 FL
EF1280023 FINK LADY 0409 6868 BG

LT RIO BLANCO 1234 P
VPI MISS DUCHESS 404 P
LT BLUEGRASS 4017 P
MF MISS LADY 6868

Will have information on supplemental sheet. Front pasture ornament, backed by a solid cow family, and tracing back to the infamous Fink 6868 cow. 0386 was arguably the hardest one to let go of and consign to this sale. There's no doubt she needs to be in a donor program.

Due to calve 8/8/22 to Schuler Rebel (Red Angus).



Lot 12- NH Lady 0386 7450 GS

LOT
13

TFC MS LUCKY 0379

DOB: 8/24/2020 • EF1309075 • P

PZC BOTTOMS UP 5011 ET
WCR ICON 756 P
M895832 WCR MS COUNTYLINE 5251 P

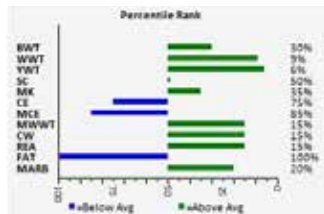
TR MR FIRE WATER 5792RET
THOMAS MS IMPRESSIVE0641
WCR COUNTY LINE 3132 P
WCR MS IMPRESSIVE 3152 P

LT LEDGER 0332 P
TFC MS LUCKY 478
F1193029 TFC MS LUCKY 152

LT BLUEGRASS 4017 P
LT BRENDA 6120 PLD
TFC MR THOMAS WIND 960
HALE MS CIGAR 676 PLD

Will have calf information on supplemental sheet. Tremendous first calf heifer with a bright future. Her and Lot 47 are the first progeny to sell out of our lead donor TFC Ms Lucky 478. Expect a brood cow with performance and style.

Due to calve 8/8/22 to Schuler Rebel (Red Angus).



Lot 13- TFC MS Lucky 0379

LOT
14

NH MISS 5836 OF 3935 FL

DOB: 8/14/2015 • F1221846 • P

LT RIO BLANCO 1234 P
VPI FREE LUNCH 708T
M736773 VPI MISS DUCHESS 404 P

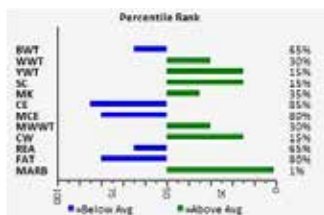
WCR PRIME CUT 764 PLD
LT PRAIRIE MAID 4054
WCR PRIME CUT 764 PLD
VCR MISS DUCHESS 703 PLD

M6 GRID MAKER 104 PET
NH MISS 3935 OF 6827 GM
EF1220985 FINK MISS 6827 3908 GG

WCR SIR TRADITION 066
VCR MISS MAC IV 317
M6 GAIN & GRADE 927 PLD
FINKS MISS 3908 1804 EBP

Will have calf information on supplemental sheet. If you're looking for a versatile cow with dimension and balanced EPDs look no further. 5836 is a stand out cow that has been in our donor program. She's only consigned to this sale because we are focused on bringing our best.

Due to calve 8/23/22 to JMAR Benaiah.



Lot 14- NH Miss 5836 of 3935 FL

#13 in the breed for Marbling! (2015 born)

LOT 15

NH MISS 606 OF 3934 3791

DOB: 9/5/2016 • F1308513 • P

M6 NEW STANDARD 842 P ET
FINK 3791 OF 0408 NS
 M845686 FINK SHANDY 0408 8531 PRO

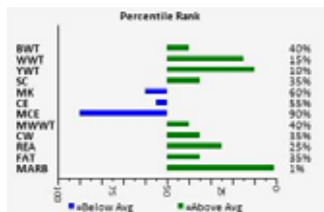
LT RIO BRAVO 3181 P
 M6 MS GRID MAKER 2175 ET
 LT EASY PRO 1158 PLD
 FINK SHANDY 8531 3872 BG

M6 GRID MAKER 104 PET
NH MISS 3934 OF 6827 GM
 EF1220984 FINK MISS 6827 3908 GG

WCR SIR TRADITION 066
 VCR MISS MAC IV 317
 M6 GAIN & GRADE 927 PLD
 FINKS MISS 3908 1804 EBP

Will have calf information on supplemental sheet. A maternal powerhouse with proven carcass genetics. 3791 was a female maker, and this female is no exception – beautiful udder and proven track record (calving dates 9/6/18, 9/11/19, 8/21/20, 8/10/21).

Due to calve 8/23/22 to LT Patriot. DNA Pending



LOT 17

FINK LADY 4382 0409 GM

DOB: 8/8/2014 • EF1206586 • P

WCR SIR TRADITION 066
M6 GRID MAKER 104 PET
 EM633377 VCR MISS MAC IV 317

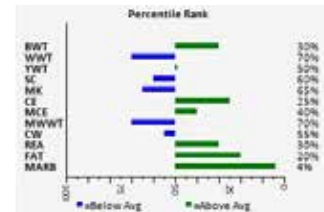
WCR SIR TRADITION 4402
 IDEAL 809 45 OF 25
 WCR SIR FA MAC 2244
 VCR MISS DUCHESS 113 PLD

LT BLUEGRASS 4017 P
FINK LADY 0409 6868 BG
 EF1136922 MF MISS LADY 6868

LT ASSERTION 1277 P
 LT PEARL'S BREEZE 2236 P
 M6 GAIN & GRADE 927 PLD
 FINKS LADY 1867 4X6BUDET

Will have calf information on supplemental sheet. Proven pedigree tracing to the LCC 6868 cow and out of the breed changer Grid Maker. Don't discount 4382 for her age, she has plenty of life left in the donor pen. If you're needing a new lead cow, she's also the first one to run for a feed bucket.

Due to calve 8/23/22 to DC/CRJ Tank. DNA Pending



LOT 16

NH EDITH 9046 3929 528

DOB: 4/4/2019 • F1308525 • P

LT LEDGER 0332 P
TFC LEGEND 528
 M867305 LT KALI'S KAT 5083 P

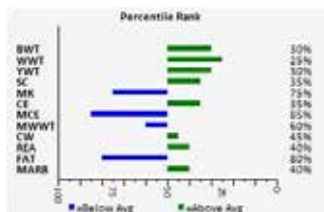
LT BLUEGRASS 4017 P
 LT BRENDA 6120 PLD
 LT PRIMED 0260 PLD
 LT KALI 3017 PLD

M6 GRID MAKER 104 PET
FINK EDITH 3929 7120 GM
 EF1185122 NWMSU EDITH 7120

WCR SIR TRADITION 066
 VCR MISS MAC IV 317
 NWMSU PLATINUM 4108
 NWMSU EDITH 492

Will have calf information on supplemental sheet. 9046 brings a unique pedigree combining both our cowherds with super sharp profile and balanced EPDs. She can be bred back to focus on performance/production or can make an easy transition to raising show heifers

Due to calve 8/23/22 to DC/CRJ Tank. DNA Pending



LOT 18

FINK VANITY 0251 6316 LL

DOB: 10/11/2020 • F1307297 • P

LT LEDGER 0332 P
ACE-ORR LOCK N LOAD 243P
 M836295 ORR'S MS PETUNIA 941P

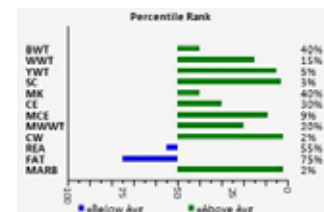
LT BLUEGRASS 4017 P
 LT BRENDA 6120 PLD
 ACE-ORR MAKERS MARK 689
 ORR'S MS PETUNIA 0054 ET

VPI FREE LUNCH 708T
FINK VANITY 6316 3911 FL
 EF1239598 FINK VANITY 3911 9532 GS

LT RIO BLANCO 1234 P
 VPI MISS DUCHESS 404 P
 FINK GOLD STANDARD 0153
 FINK VANITY 9532 6879 GM

Top 3% TSI. Wanting to add a potential donor that has loads of proven bulls in her pedigree, is 100% looks, and pretty decent on EPDs? The dam of this female is working in Jerry and Ellen Cassidy's herd in Missouri. It was hard to let her go when we sold her! Lots of green bars!

Bred AI 6/2 to LCC 923 exposed to LCC Hondo until August 15.



Dam (6316) #26 in the breed for Marbling! (2016 born) —



Lot 16- NH Edith 9046 3929 528



Lot 18- Fink Vanity 0251 6316 L&L

Fink Spring 2023 Calving Bred Heifers

LOT
19

FINK PERFECTION 0229 7546 LL

DOB: 10/6/2020 • F1307287 • P

LT LEDGER 0332 P
ACE-ORR LOCK N LOAD 243P
M836295 ORR'S MS PETUNIA 941P

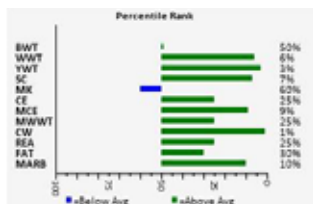
LT BLUEGRASS 4017 P
LT BRENDA 6120 PLD
ACE-ORR MAKERS MARK 689
ORR'S MS PETUNIA 0054 ET

FINK GOLD STANDARD 0153
FINK PERFECTION 7546 5533 GS
F1256132 FINK PERFECTION 5533 7738 GS

M6 NEW STANDARD 842 P ET
FINKS MISS 25503575BUDET
FINK GOLD STANDARD 0153
FINK PERFECTION 7738 248 GM ET

Top 2% TSI. Fills many of the bars on one side! Moderate framed, nice made Lock N Load daughter out of a double bred Gold Standard dam. Her dam "7738" is a full sister to M6 New Standards dam!

Bred AI 6/6 to LCC Hondo exposed to LCC Hondo until August 15.



Lot 19- Fink Perfection 0229 7546 L&L

LOT
20

FINK PERFECTION 0456 3834 GS

DOB: 8/25/2020 • EF1307336 • P

M6 NEW STANDARD 842 P ET
FINK GOLD STANDARD 0153
EM799353 FINKS MISS 25503575BUDET

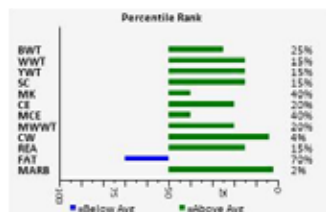
LT RIO BRAVO 3181 P
M6 MS GRID MAKER 2175 ET
RC BUDSMYDAD 225 POLLED
WCR MISS TRADITION 3575

VPI FREE LUNCH 708T
FINK PERFECTION 3834 7738 FL
EF1184769 FINK PERFECTION 7738 248 GM ET

LT RIO BLANCO 1234 P
VPI MISS DUCHESS 404 P
M6 GRID MAKER 104 PET
M6 MS E46'S DUKE 248 PET

Top 8% TSI, 2% Udder, 4% Teat. Direct daughter of long time donor "3834" that sells in this sale. Full brothers to this female have sold across the U.S. The dam "3834" is #14 for marbling in the breed. We are keeping several full sisters to "0456" Plenty of green bars!

Bred AI 6/19 to LCC Hondo exposed to LCC Hondo until August 15.



Lot 20- Fink Perfection 0456 3834 GS

LOT
21

FINK LADY 0242 8003 GS

DOB: 8/14/2020 • F1307289 • P

M6 NEW STANDARD 842 P ET
FINK GOLD STANDARD 0153
EM799353 FINKS MISS 25503575BUDET

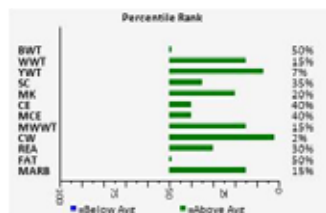
LT RIO BRAVO 3181 P
M6 MS GRID MAKER 2175 ET
RC BUDSMYDAD 225 POLLED
WCR MISS TRADITION 3575

FINK GOLD STANDARD 0153
FINK LADY 8003 3864 GS
EF1265699 FINK LADY 3864 1242 FL

M6 NEW STANDARD 842 P ET
FINKS MISS 25503575BUDET
VPI FREE LUNCH 708T
FINK LADY 1242 9521 2250

Top 7% TSI. The dam of this female is a tank! She will start in our embryo program this fall. Double bred Gold Standard! Remember he is 12 years old and still in the top 10% of all bulls for TSI! How many bulls that age can?

Bred AI 6/25 to LCC 923 exposed to LCC Hondo until August 15.



Lot 21- Fink Lady 0242 8003 GS

LOT
22

FINK PERFECTION 0432 7525 FL

DOB: 8/24/2020 • EF1307314 • P

LT RIO BLANCO 1234 P
VPI FREE LUNCH 708T
M736773 VPI MISS DUCHESS 404 P

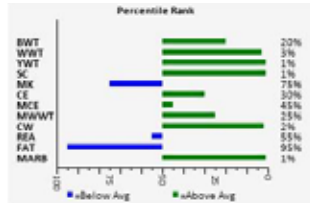
WCR PRIME CUT 764 PLD
LT PRAIRIE MAID 4054
WCR PRIME CUT 764 PLD
VCR MISS DUCHESS 703 PLD

FINK GOLD STANDARD 0153
FINK PERFECTION 7525 3834 GS
F1255986 FINK PERFECTION 3834 7738 FL

M6 NEW STANDARD 842 P ET
FINKS MISS 25503575BUDET
VPI FREE LUNCH 708T
FINK PERFECTION 7738 248 GM ET

Top 1% TSI, 9% Udder. DOUBLE BRED FREE LUNCH WITH GOLD STANDARD SETTING IN THE MIDDLE! Granddam is "3834" that sells in this sale, look her up in the catalog. 4 generations of donors on the dam's side here at Fink's.

Bred AI 6/1 to LCC 923 exposed to LCC Hondo until August 15.



Lot 22- Fink Perfection 0432 7525 FL

#21 in the breed for Marbling! (2020 born)

#20 in the breed for TSI! (2020 born)

LOT
23

LCC MISS LADY 0459 4294 GS

DOB: 9/3/2020 • EF1307435 • Dehorned

M6 NEW STANDARD 842 P ET
FINK GOLD STANDARD 0153
EM799353 FINKS MISS 25503575BUDET

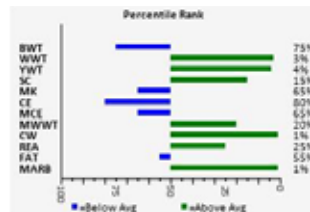
LT RIO BRAVO 3181 P
M6 MS GRID MAKER 2175 ET
RC BUDSMYDAD 225 POLLED
WCR MISS TRADITION 3575

VPI FREE LUNCH 708T
MF MISS LADY 4294 6868 FL
EF1201799 MF MISS LADY 6868

LT RIO BLANCO 1234 P
VPI MISS DUCHESS 404 P
M6 GAIN & GRADE 927 PLD
FINKS LADY 1867 4X6BUDET

Top 4% TSI, 15% Udder, 35% Teat. Full sister to "8007" pictured below. A very deep bodied cow type of heifer. The dam of these two is still producing embryos! There isn't very many direct daughters of this dam so this is a rare opportunity.

Bred AI 6/7 to Red Angus Wideload (sexed male) exposed to LCC Hondo until August 15.



Lot 23- LCC Miss Lady 0459 4294 GS

Dam (4294) #3 in the entire breed for Marbling!—

LOT
24

LCC MISS LADY 0458 4294 GS

DOB: 8/27/2020 • EF1307434 • Dehorned

M6 NEW STANDARD 842 P ET
FINK GOLD STANDARD 0153
EM799353 FINKS MISS 25503575BUDET

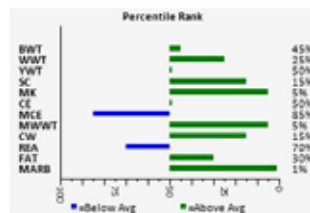
LT RIO BRAVO 3181 P
M6 MS GRID MAKER 2175 ET
RC BUDSMYDAD 225 POLLED
WCR MISS TRADITION 3575

VPI FREE LUNCH 708T
MF MISS LADY 4294 6868 FL
EF1201799 MF MISS LADY 6868

LT RIO BLANCO 1234 P
VPI MISS DUCHESS 404 P
M6 GAIN & GRADE 927 PLD
FINKS LADY 1867 4X6BUDET

Top 1% Udder, 3% Teat. This heifers full sister sells as lot 23. The 4294 dam is one of the original 6868 daughters and she is still producing embryos today! This is a rare opportunity because there isn't very many daughters of this cow left.

Bred AI 6/29 to DC/CRJ Tank exposed to LCC Hondo until August 15.



"8007" Is a full sister to lots 23 & 24.. She sold to Ankony Farms, Virgil Lovell for \$26,000 this past spring at The Sale of Excellence, pick of Fink herd.

Dam (4294) #3 in the entire breed for Marbling!—

LOT
25

LCC MISS LADY 0308 653 BF

DOB: 9/3/2020 • EF1307438 • P

HCR FLASH 5074 POLLED
ONE PENNY BLANCO FLASH 6424
M731925 DOUBLE-H BOBSY 424P

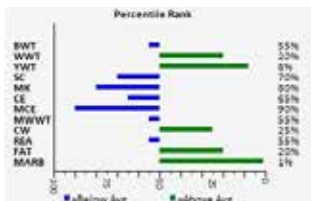
HCR EXODUS 9033 POLLED
MISS HCR MAC 2015 POLLED
LT RIO BLANCO 1234 P
DOUBLE-H DANCEWITHME209M

FINK GOLD STANDARD 0153
FINK MISS LADY 653 023 GS
EF1231217 FINK MISS LADY 023 BG

M6 NEW STANDARD 842 P ET
FINKS MISS 25503575BUDET
LT BLUEGRASS 4017 P
MF MISS LADY 6868

Top 4% TSI. This heifer's full sister is lot 26. Both females have great EPDs. These will be ones to watch (to create exciting matings). They of course stem back to the 6868 cow family that has been a tremendous cow family for Chad and Megan.

Bred AI 6/7 to LCC 923 exposed to LCC Hondo until August 15.



LOT
27

FINK LADY 0252 5804 FL

DOB: 8/30/2020 • F1307298 • P

LT RIO BLANCO 1234 P
VPI FREE LUNCH 708T
M736773 VPI MISS DUCHESS 404 P

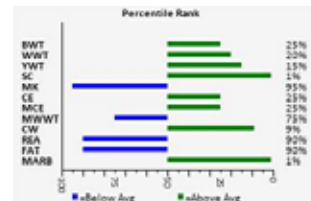
WCR PRIME CUT 764 PLD
LT PRAIRIE MAID 4054
WCR PRIME CUT 764 PLD
VCR MISS DUCHESS 703 PLD

FINK GOLD STANDARD 0153
FINK LADY 5804 9521 GS
EF1221293 FINK LADY 9521 6815 GM

M6 NEW STANDARD 842 P ET
FINKS MISS 25503575BUDET
M6 GRID MAKER 104 PET
FINK LADY 6815 3832 GG TW

Top 10% TSI. One of the best prospects selling. We are still flushing her dam- THE SAME WAY- over and over to create more like this one. A full sister to 0252 is our favorite 2018 female. The dam of this female has a great udder and milks great. Free Lunch adds marbling, guts, and great disposition. He's a real deal and limited semen.

Bred AI 6/20 to LCC Hondo exposed to LCC Hondo until August 15.



#41 in the breed for Marbling! (2020 born)



Lot 25- LCC Miss Lady 0308 653 BF



Lot 27- Fink Lady 0252 5804 FL

LOT
26

LCC MISS LADY 0309 653 BF

DOB: 9/7/2020 • EF1307439 • P

HCR FLASH 5074 POLLED
ONE PENNY BLANCO FLASH 6424
M731925 DOUBLE-H BOBSY 424P

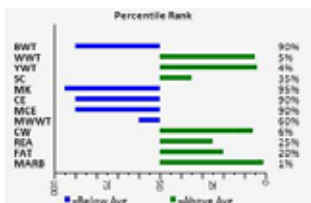
HCR EXODUS 9033 POLLED
MISS HCR MAC 2015 POLLED
LT RIO BLANCO 1234 P
DOUBLE-H DANCEWITHME209M

FINK GOLD STANDARD 0153
FINK MISS LADY 653 023 GS
EF1231217 FINK MISS LADY 023 BG

M6 NEW STANDARD 842 P ET
FINKS MISS 25503575BUDET
LT BLUEGRASS 4017 P
MF MISS LADY 6868

Top 3% TSI. Their mother is one of the nicest cows to look at on the Fink ranch. They will make great cows! There is only a few Flash daughters in the sale and these two would be ones to watch if you want daughters of the breeds #2 proven bull for marbling!

Bred AI 6/24 to LCC 923 exposed to LCC Hondo until August 15.



#23 in the breed for Marbling! (2020 born)

LOT
28

LLC MISS LADY 0306 6322 LL

DOB: 9/1/2020 • EF1307304 • P

LT LEDGER 0332 P
ACE-ORR LOCK N LOAD 243P
M836295 ORR'S MS PETUNIA 941P

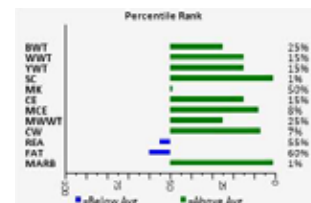
LT BLUEGRASS 4017 P
LT BRENDA 6120 PLD
ACE-ORR MAKERS MARK 689
ORR'S MS PETUNIA 0054 ET

VPI FREE LUNCH 708T
FINK MISS LADY 6322 2691 FL
EF1239604 MF MISS LADY 2691 6868 NS

LT RIO BLANCO 1234 P
VPI MISS DUCHESS 404 P
M6 NEW STANDARD 842 P ET
MF MISS LADY 6868

Top 9% TSI. Another Lock n Load daughter that has all the right pieces. Her numbers are good to look at! Her dam sold to NextGen in our 2020 sale. Lots of green bars!

Bred AI 6/9 to DC/CRJ Tank exposed to LCC Hondo until August 15.



#31 in the breed for Marbling! (2020 born)
Dam (6322) #9 in the breed for Marbling! (2016 born)

LOT 29

FINK PERFECTION 0482 3832 GS

DOB: 9/1/2020 • EF1307311 • P

M6 NEW STANDARD 842 P ET
FINK GOLD STANDARD 0153
 EM799353 FINKS MISS 25503575BUDET

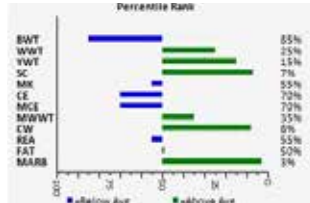
LT RIO BRAVO 3181 P
 M6 MS GRID MAKER 2175 ET
 RC BUDSMYDAD 225 POLLED
 WCR MISS TRADITION 3575

VPI FREE LUNCH 708T
FINK PERFECTION 3832 7738 FL
 EF1184767 FINK PERFECTION 7738 248 GM ET

LT RIO BLANCO 1234 P
 VPI MISS DUCHESS 404 P
 M6 GRID MAKER 104 PET
 M6 MS E46'S DUKE 248 PET

Top 15% TSI. Many will find this female. The dam 3832 sells in this sale. One of our oldest donors for a reason! Graddam is a donor for Tom Greco and she is also a full sister to M6 New Standard's dam.

Bred AI 6/8 to LCC 923 exposed to LCC Hondo until August 15.



LOT 31

FINK PRIDE 0316 0296 GS

DOB: 9/5/2020 • EF1307309 • P

M6 NEW STANDARD 842 P ET
FINK GOLD STANDARD 0153
 EM799353 FINKS MISS 25503575BUDET

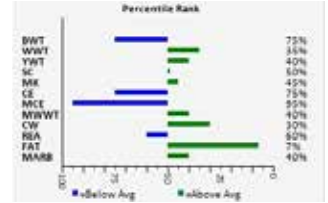
LT RIO BRAVO 3181 P
 M6 MS GRID MAKER 2175 ET
 RC BUDSMYDAD 225 POLLED
 WCR MISS TRADITION 3575

M6 GRID MAKER 104 PET
FINK PRIDE 0296 6871 GM
 EF1135199 FINK PRIDE 6871 4871 GG

WCR SIR TRADITION 066
 VCR MISS MAC IV 317
 M6 GAIN & GRADE 927 PLD
 FINKSPRIDE487180239108ET

Top 9% TSI. Moderate, deep, in her make-up. This kind of female produces the kind of bulls that will be a driving force when the beef industry accepts the fact that extra fat is costly to put on - then cut off.

Bred AI 6/7 to LCC 923 exposed to LCC Hondo until August 15.



Lot 29- Fink Perfection 0482 3832 GS

LOT 32

FINK PRIDE 0315 0296 GS

DOB: 9/9/2020 • EF1307308 • P

M6 NEW STANDARD 842 P ET
FINK GOLD STANDARD 0153
 EM799353 FINKS MISS 25503575BUDET

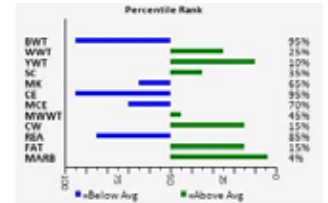
LT RIO BRAVO 3181 P
 M6 MS GRID MAKER 2175 ET
 RC BUDSMYDAD 225 POLLED
 WCR MISS TRADITION 3575

M6 GRID MAKER 104 PET
FINK PRIDE 0296 6871 GM
 EF1135199 FINK PRIDE 6871 4871 GG

WCR SIR TRADITION 066
 VCR MISS MAC IV 317
 M6 GAIN & GRADE 927 PLD
 FINKSPRIDE487180239108ET

Really deep ribbed that we like to have pastures full of. They hold together, have capacity to consume any kind of grass. Very nice female.

Bred AI 6/8 to LCC 923 exposed to LCC Hondo until August 15.



LOT 30

FINK LADY 0304 418 GS

DOB: 9/3/2020 • EF1307302 • P

M6 NEW STANDARD 842 P ET
FINK GOLD STANDARD 0153
 EM799353 FINKS MISS 25503575BUDET

LT RIO BRAVO 3181 P
 M6 MS GRID MAKER 2175 ET
 RC BUDSMYDAD 225 POLLED
 WCR MISS TRADITION 3575

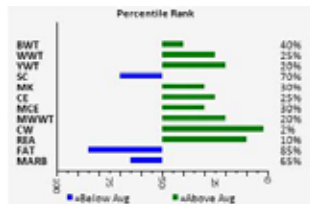
VPI FREE LUNCH 708T
FINK LADY 418 4952 FL
 EF1198076 FINKS LADY 4952 2528 9108

LT RIO BLANCO 1234 P
 VPI MISS DUCHESS 404 P
 LT UNLIMITED EASE 9108
 FINKS LADY 2528 4X6 FLET

Top 2% Udder, 20% TSI, 15% Teat.

Austin Flaughter, Kentucky, owns the dam of this female. She is very nice! Solid female here. Nice to look at and very workable EPDs.

Bred AI 6/5 to LCC 923 exposed to LCC Hondo until August 15.



LOT 33

FINK LADY 0443 7554 LL

DOB: 9/3/2020 • EF1307323 • P

LT LEDGER 0332 P
ACE-ORR LOCK N LOAD 243P
 M836295 ORR'S MS PETUNIA 941P

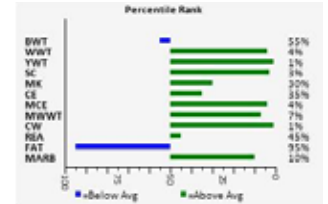
LT BLUEGRASS 4017 P
 LT BRENDA 6120 PLD
 ACE-ORR MAKERS MARK 689
 ORR'S MS PETUNIA 0054 ET

FINK GOLD STANDARD 0153
FINK LADY 7554 417 GS
 EF1256138 FINK LADY 417 4952 FL

M6 NEW STANDARD 842 P ET
 FINKS MISS 25503575BUDET
 VPI FREE LUNCH 708T
 FINKS LADY 4952 2528 9108

Top 2% TSI, 45% Udder. This female has an excellent line up for EPDs. Dam is Gold Standard crossed with Free Lunch. That ties a lot of good things together. Lots of green bars!

Bred AI 6/20 to LCC 923 exposed to LCC Hondo until August 15.



Fink Spring 2023 Calving Bred Heifers & Fall 2021 Born Open Heifers

LOT
34

FINK PERFECTION 0450 7545 BF

DOB: 8/28/2020 • EF1307330 • P

HCR FLASH 5074 POLLED
ONE PENNY BLANCO FLASH 6424
M731925 DOUBLE-H BOBSY 424P

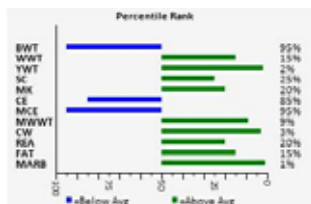
HCR EXODUS 9033 POLLED
MISS HCR MAC 2015 POLLED
LT RIO BLANCO 1234 P
DOUBLE-H DANCEWITHME209M

FINK GOLD STANDARD 0153
FINK PERFECTION 7545 4301 GS
EF1256131 FINK PERFECTION 4301 7738 FL

M6 NEW STANDARD 842 P ET
FINKS MISS 25503575BUDET
VPI FREE LUNCH 708T
FINK PERFECTION 7738 248 GM ET

Moderate framed heifer. Goes back to M6 New Standard family on the dam's side. The granddam got away from us to soon- Frank Turner in Alabama is using her in an excellent group of females they bought when starting their herd.

Bred AI 6/28 to LCC 923 exposed to LCC Hondo until August 15.



LOT
37

LCC MISS LADY 1674 8871 L&L

DOB: 9/25/2021 • F1323082 • P

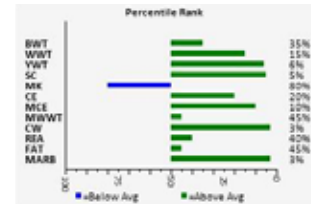
LT LEDGER 0332 P
ACE-ORR LOCK N LOAD 243P
M836295 ORR'S MS PETUNIA 941P

LT BLUEGRASS 4017 P
LT BRENDA 6120 PLD
ACE-ORR MAKERS MARK 689
ORR'S MS PETUNIA 0054 ET

FINK GOLD STANDARD 0153
LCC MISS LADY 8871 4297 GS
EF1275493 MF MISS LADY 4297 6868 FL

M6 NEW STANDARD 842 P ET
FINKS MISS 25503575BUDET
VPI FREE LUNCH 708T
MF MISS LADY 6868

Top 3% TSI. Plenty of green in this Lock N Load female from the Lady family. The granddam was in the ET program for several years and of course backed up by 6868. Her full sister is Lot 38! Two great females. *Sells open.*



#5 in the breed for Marbling! (2020 born)

#17 in the breed for TSI! (2020 born)

LOT
35

FINK MISS 0461 5784 GS

DOB: 8/25/2020 • EF1307338 • P

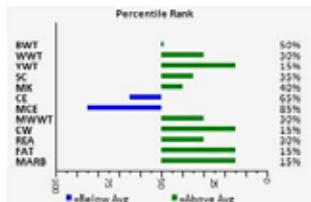
M6 NEW STANDARD 842 P ET
FINK GOLD STANDARD 0153
EM799353 FINKS MISS 25503575BUDET

LT RIO BRAVO 3181 P
M6 MS GRID MAKER 2175 ET
RC BUDSMYDAD 225 POLLED
WCR MISS TRADITION 3575

VPI FREE LUNCH 708T
FINK MISS 5784 9635 FL
EF1221252 FINK MISS 9635 5651 GM

LT RIO BLANCO 1234 P
VPI MISS DUCHESS 404 P
M6 GRID MAKER 104 PET
FINKS MISS 5651 1806 GG

Top 15% TSI, 15% Udder, 25% Teat. This heifer has some nice females backing her up. Way back is Gain and Grade and HCR Flash 5074. Two of the top 3 proven bulls in the breed for marbling!
Bred AI 6/8 to LCC Hondo exposed to LCC Hondo until August 15.



Lot 37- LCC Miss Lady 1674 8871 L&L

LOT
36

FINK MISS 0448 7532 BF

DOB: 9/1/2020 • EF1307328 • P

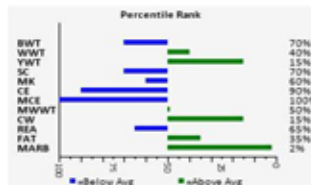
HCR FLASH 5074 POLLED
ONE PENNY BLANCO FLASH 6424
M731925 DOUBLE-H BOBSY 424P

HCR EXODUS 9033 POLLED
MISS HCR MAC 2015 POLLED
LT RIO BLANCO 1234 P
DOUBLE-H DANCEWITHME209M

FINK GOLD STANDARD 0153
FINK MISS 7532 3884 GS
EF1256117 FINK MISS 3884 0342 FL

M6 NEW STANDARD 842 P ET
FINKS MISS 25503575BUDET
VPI FREE LUNCH 708T
FINK MISS 0342 6849 GM

Top 6% TSI. Solid female- Doesn't blow any one area apart but should make a solid cow. Carries a little hair.
Bull bred on 7/8 to LCC Hondo.



LOT
38

FINK MISS LADY 1877 8871 L&L

DOB: 9/12/2021 • EF1323096 • P

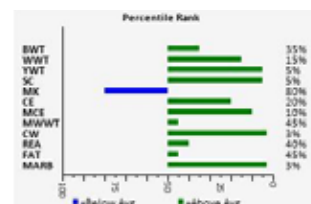
LT LEDGER 0332 P
ACE-ORR LOCK N LOAD 243P
M836295 ORR'S MS PETUNIA 941P

LT BLUEGRASS 4017 P
LT BRENDA 6120 PLD
ACE-ORR MAKERS MARK 689
ORR'S MS PETUNIA 0054 ET

FINK GOLD STANDARD 0153
LCC MISS LADY 8871 4297 GS
EF1275493 MF MISS LADY 4297 6868 FL

M6 NEW STANDARD 842 P ET
FINKS MISS 25503575BUDET
VPI FREE LUNCH 708T
MF MISS LADY 6868

Top 3% TSI. Very nice Lock N Load female. Full sister to the previous female. This one is an ET. Another one of the 6868 legacy. The dam of these two females has an excellent udder. *Sells open.*



LOT
39

FINK LADY 1793 7757 L&L

DOB: 8/25/2021 • EF1323094 • P

LT LEDGER 0332 P
ACE-ORR LOCK N LOAD 243P
M836295 ORR'S MS PETUNIA 941P

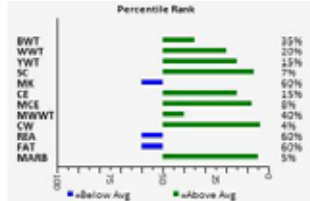
LT BLUEGRASS 4017 P
LT BRENDA 6120 PLD
ACE-ORR MAKERS MARK 689
ORR'S MS PETUNIA 0054 ET

FINK GOLD STANDARD 0153
FINK LADY 7757 428 GS
F1255970 FINK LADY 428 4945 FL

M6 NEW STANDARD 842 P ET
FINKS MISS 25503575BUDET
VPI FREE LUNCH 708T
FINKS LADY 4945 2286 9108

Top 9% TSI. A full brother to this female will be one of the best Lock N Load sons we have ever sold. EPDs are pretty good across the board. Lady family once again!

Sells open.



Lot 39- Fink Lady 1793 7757 L&L

LOT
40

FINK LADY 1794 7757 L&L

DOB: 9/2/2021 • EF1323095 • P

LT LEDGER 0332 P
ACE-ORR LOCK N LOAD 243P
M836295 ORR'S MS PETUNIA 941P

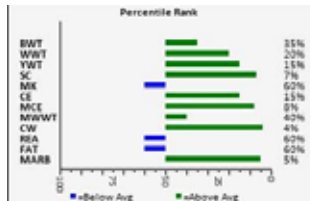
LT BLUEGRASS 4017 P
LT BRENDA 6120 PLD
ACE-ORR MAKERS MARK 689
ORR'S MS PETUNIA 0054 ET

FINK GOLD STANDARD 0153
FINK LADY 7757 428 GS
F1255970 FINK LADY 428 4945 FL

M6 NEW STANDARD 842 P ET
FINKS MISS 25503575BUDET
VPI FREE LUNCH 708T
FINKS LADY 4945 2286 9108

Top 9% TSI. Dam is selling in this sale as a sale attraction! 7757 has been a past donor. This full sister to Lot 39 is a touch behind because of her recipient dam. That won't change her genetics. Lots of green lines!

Sells open.



LCC Miss Lady 6333 was Ankony Farms \$24,000 pick of the Larson herd this past January at Ft. Worth! She has many relatives in this sale. They all go back to the same cow 6868 that has sold many sons and daughters throughout the United States. 6333 IS ALSO THE HIGHEST MARBLING FEMALE IN THE CHAROLAIS BREED! This is a tremendous cow that has a bright future.

LOT
41

FINK PERFECTION 1778 8842 GS

DOB: 8/23/2021 • EF1323093 • P

M6 NEW STANDARD 842 P ET
FINK GOLD STANDARD 0153
EM799353 FINKS MISS 25503575BUDET

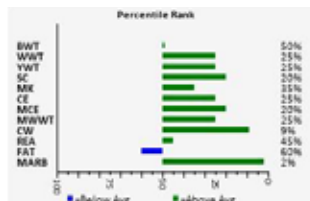
LT RIO BRAVO 3181 P
M6 MS GRID MAKER 2175 ET
RC BUDSMYDAD 225 POLLED
WCR MISS TRADITION 3575

VPI FREE LUNCH 708T
FINK PERFECTION 8842 7738 FL
EF1275454 FINK PERFECTION 7738 248 GM ET

LT RIO BLANCO 1234 P
VPI MISS DUCHESS 404 P
M6 GRID MAKER 104 PET
M6 MS E46'S DUKE 248 PET

Top 20% TSI. We like cattle that have balance in many traits. This super nice Gold Standard is a prime example of this. The dam was purchased in a group of females by Jerry and Ellen Cassady. This heifer is offered as a high lite. Dig through this pedigree!

Sells open.



Lot 41- Fink Perfection 1778 8842 GS

Dam (8842) #3 in the breed for Marbling! (2018 born)

LOT 42

LCC MISS LADY 1905 6868 FL

DOB: 9/2/2021 • EF1323081 • P

LT LEDGER 0332 P
ACE-ORR LOCK N LOAD 243P
 M836295 ORR'S MS PETUNIA 941P

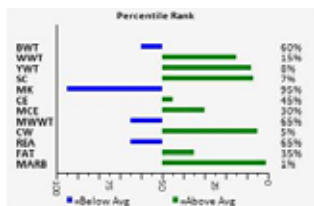
M6 GAIN & GRADE 927 PLD
MF MISS LADY 6868
 F1061484 FINKS LADY 1867 4X6BUDET

LT BLUEGRASS 4017 P
 LT BRENDA 6120 PLD
 ACE-ORR MAKERS MARK 689
 ORR'S MS PETUNIA 0054 ET

WCR SIR DUKE 761
 M6 MISS MAC 4140
 RC BUDSMYDAD 225 POLLED
 FINKS PERFORM 4X6D040PET

Top 6% TSI. This is the last direct daughter of 6868. She came in a little lighter but has put on the pounds to catch up. Her marbling EPD is high and this heifer would be one to look for in the future. Her dam 6868 is responsible for over \$200,000 of sons and daughter sales.

Sells open.



LOT 44

FINK PERFECTION 1664 898 MAR

DOB: 9/6/2021 • F1323100 • P

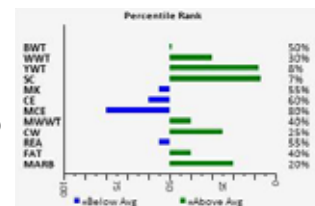
ONE PENNY BLANCO FLASH 6424
FINK MARBULL 9123
 M939873 FINK SARA 3921 1291 FL

WC BIG BEN 9036 P
FINK PERFECTION 898 2697 BB
 EF1265822 FINK PERFECTION 2697 7742 RB

HCR FLASH 5074 POLLED
 DOUBLE-H BOBSY 424P
 VPI FREE LUNCH 708T
 FINK SARA 1291 9647 BG

LT BLUEGRASS 4017 P
 VCRMISDUCHESS9506POLLED
 LT RIO BRAVO 3181 P
 FINK PERFECTION 7742 248 GM ET

Top 5% TSI. We are sharing our first offspring of Marbull. Dam is a high volume, Big Ben daughter out of M6 New Standard lineage. Marbull cattle have outstanding growth. He was one of our high scanning bulls in our 2020 bull sale, that we chose to collect some semen on. *Sells open.*



LOT 43

FINK MISS LADY 1887 6388 FL

DOB: 9/6/2021 • EF1323099 • P

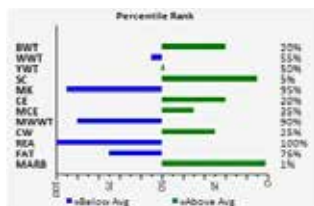
LT RIO BLANCO 1234 P
VPI FREE LUNCH 708T
 M736773 VPI MISS DUCHESS 404 P

FINK GOLD STANDARD 0153
FINK MISS LADY 6388 6868 GS
 EF1239584 MF MISS LADY 6868

WCR PRIME CUT 764 PLD
 LT PRAIRIE MAID 4054
 WCR PRIME CUT 764 PLD
 VCR MISS DUCHESS 703 PLD

M6 NEW STANDARD 842 P ET
 FINKS MISS 25503575BUDET
 M6 GAIN & GRADE 927 PLD
 FINKS LADY 1867 4X6BUDET

We generally don't let females like this one leave this early in life. Only because of this sale, we are putting this female in. Note the dam is a Gold Standard - a direct daughter of 6868. The dam has an excellent udder and in the ET program. Being flushed to Free Lunch more! *Sells open.*



LOT 45

FINK MISS LADY 1885 8007 L&L

DOB: 9/5/2021 • EF1323098 • P

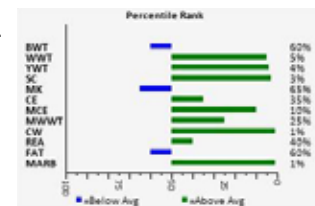
LT LEDGER 0332 P
ACE-ORR LOCK N LOAD 243P
 M836295 ORR'S MS PETUNIA 941P

FINK GOLD STANDARD 0153
FINK MISS LADY 8007 4294 GS
 EF1267899 MF MISS LADY 4294 6868 FL

LT BLUEGRASS 4017 P
 LT BRENDA 6120 PLD
 ACE-ORR MAKERS MARK 689
 ORR'S MS PETUNIA 0054 ET

M6 NEW STANDARD 842 P ET
 FINKS MISS 25503575BUDET
 VPI FREE LUNCH 708T
 MF MISS LADY 6868

Top 3% TSI. Dam of this female was Ankony's pick of Fink cows this spring. Pick sold at the Sale of Excellence in May for \$26,000. Lined up to Megan's Lady family. This female has a touch more frame, but made very nice. *Sells open.*



#50 in the breed for Marbling! (2021 born)



Lot 43- Fink Miss Lady 1887 6388 FL

LOT 46

FINK PERFORM 1669 9002 MAR

DOB: 8/14/2021 • F1323092 • P

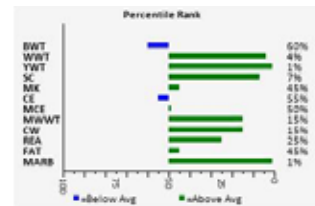
ONE PENNY BLANCO FLASH 6424
FINK MARBULL 9123
 M939873 FINK SARA 3921 1291 FL

FINK GOLD STANDARD 0153
FINK PERFORM 9002 OF 3834 GS
 EF1286464 FINK PERFECTION 3834 7738 FL

HCR FLASH 5074 POLLED
 DOUBLE-H BOBSY 424P
 VPI FREE LUNCH 708T
 FINK SARA 1291 9647 BG

M6 NEW STANDARD 842 P ET
 FINKS MISS 25503575BUDET
 VPI FREE LUNCH 708T
 FINK PERFECTION 7738 248 GM ET

Top 1% TSI. Out of a 1st calf heifer - that won't be leaving the herd for several years. One of our best 2019 females! Perfect udder, long, deep. New Standard family up close! Granddam of this heifer sells in this sale - 3834. Adding up the green lines? Check this nice heifer out. *Sells open.*



#29 in the breed for TSI! (2021 born)



TFC MS LUCKY 1528

DOB: 8/22/2021 • EF1323293 • P

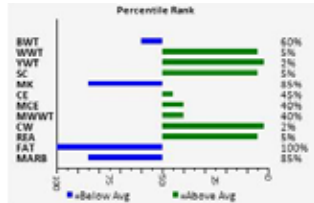
SPARROWS FARGO 811U
RBM FARGO Y111
 EM809088 HC RHINESTONE 5100

WINN MANS LANZA 610S
 SPARROWS DELIGHT 74L
 LT EASY PRO 1158 PLD
 HC JACK 2082

LT LEDGER 0332 P
TFC MS LUCKY 478
 F1193029 TFC MS LUCKY 152

LT BLUEGRASS 4017 P
 LT BRENDA 6120 PLD
 TFC MR THOMAS WIND 960
 HALE MS CIGAR 676 PLD

Top 4% TSI. V. Another nice 478 daughter that brings the power and dimension from her dam, and added performance from her sire, Fargo. A nice balance of eye appeal with an exceptional EPD profile with 6 traits in the top 5%. *Sells open.*
Owned by Hargrave's.



FINK PERFECTION 1662 8861 MAR

DOB: 8/19/2021 • F1323091 • P

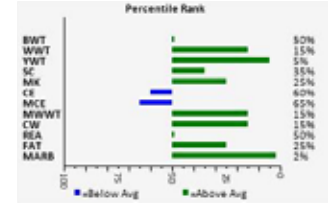
ONE PENNY BLANCO FLASH 6424
FINK MARBULL 9123
 M939873 FINK SARA 3921 1291 FL

HCR FLASH 5074 POLLED
 DOUBLE-H BOBSY 424P
 VPI FREE LUNCH 708T
 FINK SARA 1291 9647 BG

FINK GOLD STANDARD 0153
FINK PERFECTION 8861 3833 GS
 EF1275473 FINK PERFECTION 3833 7738 FL

M6 NEW STANDARD 842 P ET
 FINKS MISS 25503575BUDET
 VPI FREE LUNCH 708T
 FINK PERFECTION 7738 248 GM ET

Top 3% TSI. Lot of green in this graph! Dam is a very nice 2nd calf cow. Granddam is a mate to 3834 and 3832 selling in this sale. 3833 was a great producer. We have several daughters and sons out of 3833 that have sold across the U.S. and totaled over \$200,000 on bull sales alone.
Sells open.



NH MISS 1526 3925 GS

DOB: 8/22/2021 • EF1323313 • P

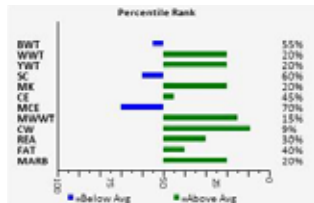
M6 NEW STANDARD 842 P ET
FINK GOLD STANDARD 0153
 EM799353 FINKS MISS 25503575BUDET

LT RIO BRAVO 3181 P
 M6 MS GRID MAKER 2175 ET
 RC BUDSMYDAD 225 POLLED
 WCR MISS TRADITION 3575

MF SILVERADO 9880 BG
FINK MISS 3925 0422 SIL
 F1184996 FINK MISS 0422 8906 PRO

LT BLUEGRASS 4017 P
 SWEGLE CREEK OLYMPIA ET
 LT EASY PRO 1158 PLD
 FINK MISS 8906 6849 LEAD P

Top 20% TSI. Solid replacement female- deep sided, nice profile, and solid EPDs. Her dam is an upcoming donor for us and is one that has a beautiful udder. *Sells open.*
Owned by Hargrave's.



FINK ANGEL 1795 761 W. WIND

DOB: 9/1/2021 • EF1323205 • P

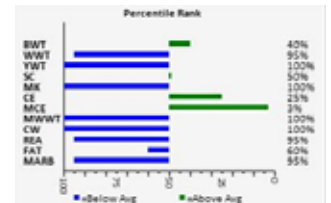
SCHURRTOP 5627
LT WYOMING WIND 4020 PLD
 M411450 LT CHAP'S LADY 2170P

WCR SIR DUKE 783
 MISS SUGAR VALLEY 908
 LT UNLIMITED CHAPS 0109
 LT PRAIRIE MAIDEN 8095

ASC ELIMINATOR 032
BIG CREEK ANGEL P
 F799605 BIG CRK BABE UNLIMITED P

HCR EXONERATOR POLLED
 MISS HCR MAC 2308
 BCR POLLED UNLIMITED 003
 WC DIXIE 1001 P

Selling a full sister to the 34th National Champion female, Big Creek Angel. Throwing back some old school proven genetics to produce an interesting female. The maternal genetics in this female are still going strong today.. Rare opportunity, don't miss out!
Sells open.



FINK LADY 1660 7549 923

DOB: 9/17/2021 • F1323090 • Dehorned

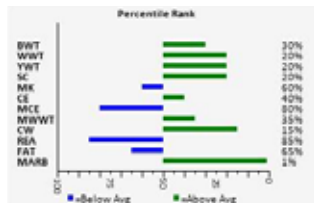
VPI FREE LUNCH 708T
LCC 923 OF 6868 FL
 EM931950 MF MISS LADY 6868

LT RIO BLANCO 1234 P
 VPI MISS DUCHESS 404 P
 M6 GAIN & GRADE 927 PLD
 FINKS LADY 1867 4X6BUDET

ONE PENNY BLANCO FLASH 6424
FINK LADY 7459 3602 BF
 EF1256135 FINK LADY 3602 8878 GS

HCR FLASH 5074 POLLED
 DOUBLE-H BOBSY 424P
 FINK GOLD STANDARD 0153
 FINK LADY 8878 4952 GMP

Top 9% TSI. Nice made 923 daughter. Interesting pedigree. 923 will be used in our program to continue the Free Lunch x 6868 influence in other cow families. Complete made.
Sells open.



FINK MISS 1878 0380 L&L

DOB: 9/15/2021 • EF1323097 • P

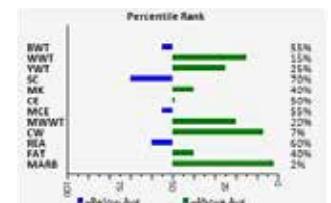
LT LEDGER 0332 P
ACE-ORR LOCK N LOAD 243P
 M836295 ORR'S MS PETUNIA 941P

LT BLUEGRASS 4017 P
 LT BRENDA 6120 PLD
 ACE-ORR MAKERS MARK 689
 ORR'S MS PETUNIA 0054 ET

LT EASY PRO 1158 PLD
FINK MISS 0380 5651 PRO
 EF1131514 FINKS MISS 5651 1806 GG

LT UNLIMITED EASE 9108
 LT LADY MACBETH 8413 ETP
 M6 GAIN & GRADE 927 PLD
 FINKS MISS 1806 3575 FET

Top 25% TSI. Outstanding EPDs for a "proven" line-up of sires. We doubt if any female lines up LT Easy Pro, Gain & Grade, and HCR Flash 5074 in the first 3 generations. Look all 3 of those sires up and see where they rank for marbling. *Sells open.*



SEMEN

- Shipping is at BUYERS EXPENSE from KABSU, Manhattan, KS.
- Most of these have been building blocks of our program. Several of them, semen is very limited or not even available. Try finding semen on these, then try buying it!
- The only bull still standing of this group is Gold Standard.

53	10 Straws	Fink Gold Standard (sexed male 5mil)	EM799353	59	5 Straws	One Penny Blanco Flash	M731925
54	5 Straws	Ace Orr Lock N Load	M836295	60	5 Straws	M6 Gain & Grade 927	M511007
55	5 Straws	VPI Free Lunch	M736773	61	9 Straws	WCR Sir Tradition 066	M318119
56	7 Straws	LT Easy Pro 1158	M620348	62	5 Straws	BR Duke 261	M487917
57	10 Straws	M6 Grid Maker	EM633377	63	20 Straws	Baldrige Kojack	M602060
58	5 Straws	Fink 3791 of 0408 NS	M845686	64	13 Straws	M6 Fresh Air 8165	M772333

FLUSH INFO

- IVF ONLY! Cross Country Genetics or Vytelle (your choice).
- Embryo work will be done late October/ early November.
- Guarantee of at least 5 freezable embryos. Extra are buyers.
- Buyer supplies semen (2 straws).
- Less than 5 freezable embryos will be pro-rated.
- All costs associated with IVF, collecting, and freezing are buyer responsibility. Please call for approx. costs.



Galen, Chad, Whitley, Megan, and Lori



Nick and Tara Hargrave

DVAuction
Broadcasting Real-Time Auctions
Videos of all cattle selling will be available October 5 at
www.finkbeefgenetics.com or
www.idealvideoproductions.com

FLUSHES

Flushes on females— Cows are not for sale, it would be a NO on every one of them!
Videos and more info on these females will be on website!

65 FINK MISS 7982 EF1256691

#7 in 2017 females for Marbling. Ask David Hobbs about this one.

69 FINK MISS 7755 EF1255968

Beautiful female!

66 FINK PERFECTION 7551 EF1256137

ALL green bars!!!
Nice female!

70 FINK MISS LADY 068 EF1298733

Full sister to Lot 67.

67 LCC MISS LADY 8008 EF1265940

Top 1% in 5 EPDs!!!
Ask David Hobbs about this one!
POWER.

71 LCC MISS LADY 8869 EF1275491

#43 in 2018 females for Marbling!

68 LCC MISS LADY 982 EF1286448

#5 in entire breed for marbling!!

72 FINK MISS LADY 653 EF12131217

Dam of LCC Hondo.

Welcome!

We appreciate you taking time to look through this catalog. We are overstocked (again) and decided to publicly sell a set of high production younger females, flushes, and semen. Proven genetics, balance in many traits, "kind", feet, udders, and disposition are important to us. We sell approx. 300 Charolais bulls each year. ALL are Fink influenced, across the U.S. Semen and Embryos have sold to Mexico, Philippines, and Costa Rica. Please visit our website for Live Discussions on several topics on our breeding philosophy, and more info on the flushes offered. Videos on flush cows will be available also.

—Galen Fink